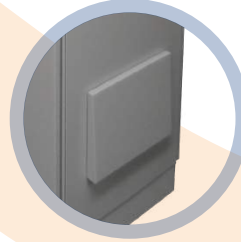


## Designed For Tough Conditions



-Suitable for outdoor use with the roof structure.

-Corrosion and sunlight resistance with phosphate coated polyester paint.



-Sealed air inlet for IP protection.

-IP sealing class with cast gasket.



Standards  
For Quality  
TS 3033 EN 60529



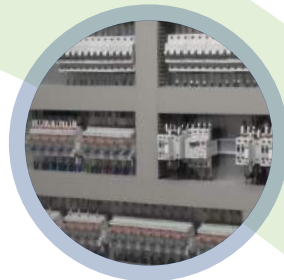
## Designed For The Efficiency



-The efficiency with VFD drive.



-Thermal aging prevention



-High safety class with halogen free feature.



-Manual operation for easy maintenance and service.